

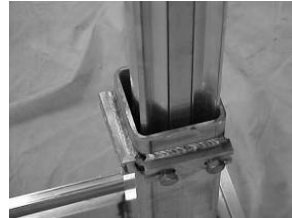
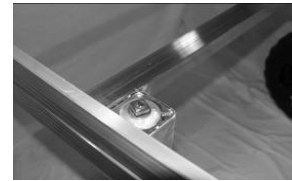


TRAC DOCK DIRECTIONS

AXLE ASSEMBLY



ATTACH WHEEL AXLE INSERTING 1 3/8 X 2 1/2" BOLT ON ONE END W/ 2" WASHER THEN SLIDING THRU WHEEL SO RECESSED SIDE OF WHEEL FACES OUT. SLIDE 2'ND WASHER ON THEN ATTACH TO THE FLUSH SIDE OF WHEEL LEG AND INSERT 1 3/8 X 2 1/2" BOLT.
 ADJUSTABLE SCREW LEGS W/ WHEELS OR FOOT PADS



USING 2 3/8 X 1 1/4" BOLTS W/ 3/8" SQUARE NUTS, INSERT LEG ASSEMBLY INTO THE 3" X 3" TUBE WITH ROUND SIDE OF LEG FACING TO THE OUTSIDE OF THE FRAME. INSERT BOLTS INTO THE SLOTTED CHANNEL SO THE BOLTS CATCH THE GROVES ON THE BACK SIDE OF THE LEG. THE TOP OF THE LEG SHOULD BE FLUSH WITH THE TOP OF THE 3" X 3" TUBE.

CROSS BRACING FOR SCREW LEGS



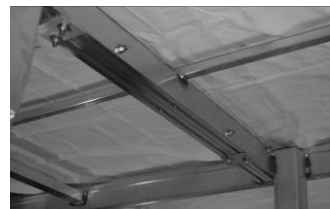
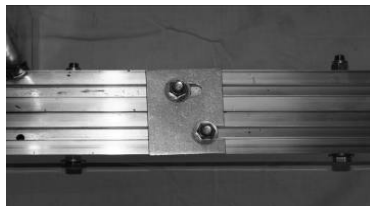
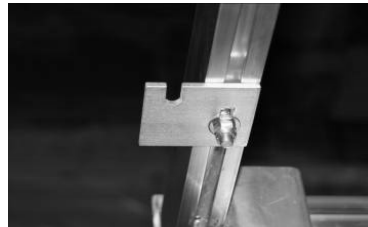
USING 3/8" X 2" BOLTS, BOLT STRAIGHT 1" X 1" BARS TO THE INNER EARS ON THE OUTER LEG TO CREATE AN X. THEN BOLT FRAME BRACES TO THE REAR TABS ON THE OUTER LEG AND BOLT BRACKET TO TRAC FRAME, ALIGN HOLE IN 1" X 1" TUBING, INSERT 3/8 X 2" BOLT , REPEAT FOR OTHER SIDE OF FRAME. TIGHTEN WHEN ALL BOLTS ARE IN PLACE.

SHORE SIDE DOCKS
 SHORESIDEDOCKS.COM
 508-248-9933
 RJIND@VERIZON.NET



TRAC DOCK DIRECTIONS

DOCK EXTENDERS, 5' , 10' , 15'



BOLT PLATES ON REAR CROSS BAR W/ 3/8" X 1 1/4" SQ. HEAD BOLT & NYLOCK. POSITION PLATES SO THE NOTCHED HOLE IS FACING THE CENTER OF THE DOCK. POSITION NEXT SECTION OF DOCK ON THE PLATES, SLIDE 3/8" X 1 1/4" SQ. BOLTS INTO THE TRAC AND POSITION IN THE SLOTTED HOLES AND TIGHTEN. THEN SLIDE 4 3/8" X 3 3/4" BOLTS THRU HOLES IN THE SIDE OF THE CROSS BAR AND TIGHTEN.

SIDE DECKS, T'S AND L'S



BOLT PLATES ON BOTTOM OF SIDE FRAMES W/ 3/8" X 1 1/4" SQ. HEAD BOLT & NYLOCK. POSITION 2 3/8" X 2 1/4" SQ. HEAD BOLTS IN SIDE TRAC TO ALIGN W/ PREDRILLED HOLES. PLACE DOCK FRAME ON PLATES AND SLIDE SIDE BOLTS THRU HOLES AND TIGHTEN WITH WASHER AND NYLOCK. THEN SLIDE 3/8" X 1 1/4" SQ. HEAD BOLTS INTO BOTTOM TRAC AND POSITION IN THE SLOTTED HOLES AND TIGHTEN.

SHORE SIDE DOCKS
SHORESIDEDOCKS.COM
508-248-9933
RJIND@VERIZON.NET

6/9/2014